

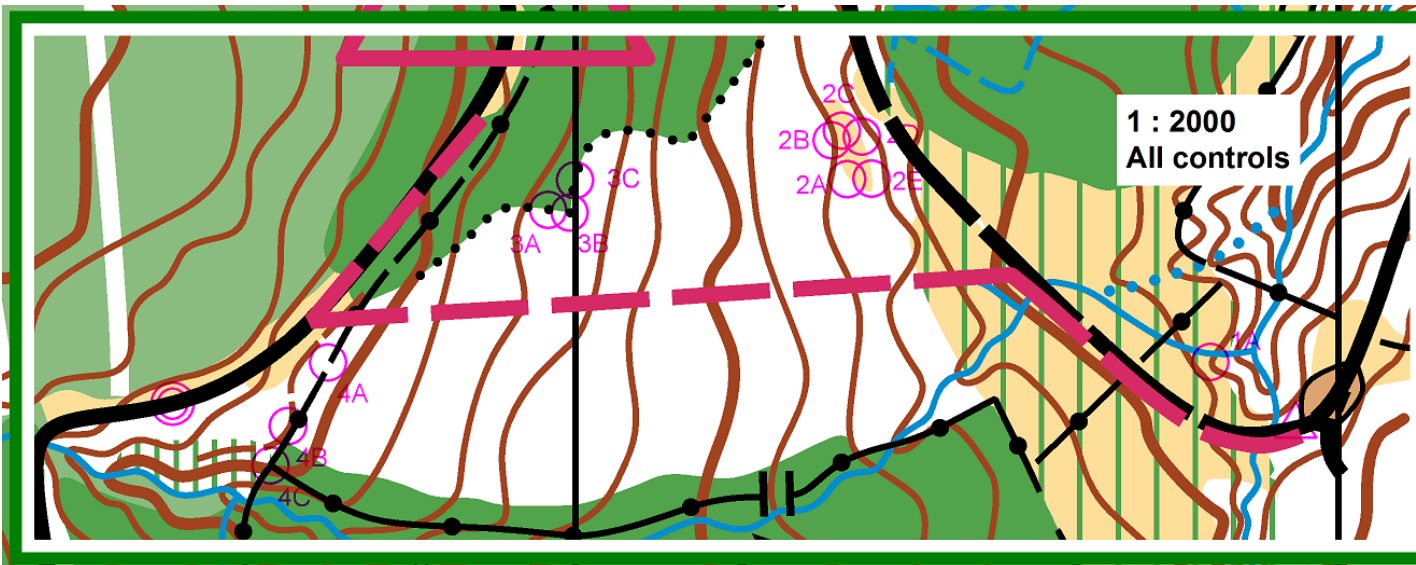
## PreO Results

The rather mixed results probably reflects the fact that I found it difficult to identify suitable PreO control sites. The so-called "A" control at PreO 1 is always a challenge when there are no other controls for reference; PreO 2 was pretty much a last resort control from a planning point-of-view because the fallen tree obscured the full extent of the clearing; and PreO 4 was on the most subtle spur I have ever seen. So, please don't worry if you weren't very successful this time because I am sure we will have some much better sites at future SOLs.

Roger Scrutton (ESOC)

\*correct result

Name	Club	PreO 1 (A)*	PreO 2 (C)*	PreO 3 (C)*	PreO 4 (B)*
Ellis, Jonathan	ESOC	Z	E	C	C
Garnett, Roger	ESOC	A	C	C	B
Grassie, Donald	GRAMP	Z	B	C	C
Grassie, Oonagh	GRAMP	Z	B	C	C
Hendrie, Fiona	FVO	Z	C	C	B
Hickling, Anne	GRAMP	A	Z	C	B
Hickling, Rob	GRAMP	A	C	C	B
Hunter, Kate	ECKO	A	B		
Hutchison, Leonne	ESOC	Z	C	C	B
Johnson, Mike	RR	A	B	B	B
Mason, John	MAROC	Z	C	C	B
Maxwell, Ian	RR	A	C	A	B
McAdam, Pauline	RR	Z	B	C	B
McQuillin, Dave	SOLWAY	A	C	C	B
McQuillin, Jane	SOLWAY	Z	Z	C	C
Rowland, Helen	GRAMP	A	C	C	Z
Smithard, Phil	KFO	A	C	C	B
Thomson, Heather	ESOC	Z	C	C	B
Will, Adrian	GRAMP	Z	B	C	C
Wilson, Rachel	CLYDE	A	B	C	B
Yardley, Keith	GRAMP	A	C	C	C
% correct		52%	52%	90%	65%



Pre0 SOL1 2016

▷ S2				
1A	Λ			
2A	⊙			⊙
2B	⊙			⊙
2C	⊙			
2D	⊙			⊙
2E	⊙			⊙
3A				⊙
3B	∇			⊙
3C	∇			⊙
4A	↘	2		⊙
4B	↘	1		
4C	↘	Y		

○--->⊙